

# SMALL HOLE SUPER DRILL EDM

PDE 43B

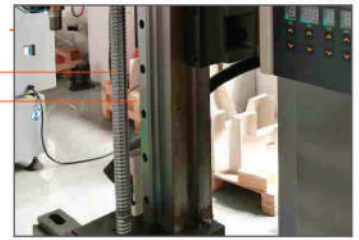


# High Performance

## Make deep holes more swiftly & precisely



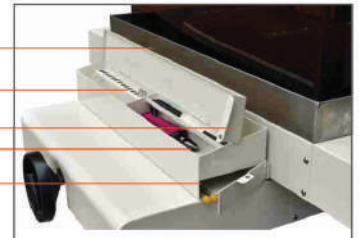
Precision made Linear Guideway  
Accurate Ball Screw



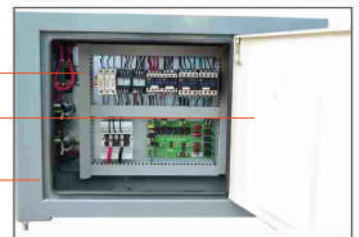
Spindle Lock Nut  
Accurate Self-lock Chuck  
Water Cover



Large Stainless Steel Tray  
Guides Storage Area  
Used Electrode Storage Area  
Tools Storage Area  
New Electrode Storage Area



Tape Seal  
Document Storage  
Electric Cabinet



Accurate Chuck and Guide

Electrical Plunger Pump

Purification Recycle System



Patented Integrated Rotation Head

Pneumatic High Pressure Pump

Ion Cleaning System

## FEATURES

1. Z axis stroke 380mm, 500mm long electrode can be used, low wear ratio and less waste of electrode, assist with super low wear circuits, to make full use ratio of electrode.
2. DC or AC servo motor are adopted, fast lifting speed, it only takes around 10 seconds to go all the travel along, save time and improve efficiency.
3. Patented rotation head with integration design. Tungsten steel is used to get better performance of wear resistance, multi-levels waterproof design, connect chuck with taper sharp, to make sure concentricity while rotating.
4. One key machining, pre-depth setting, centering, expert database, numerical sampling, self-adaption servo tracking, penetrate function, high speed machining, surface protection, machining off head back function. It can use electrode with Min. diameter 0.15mm, to process job pieces with thickness 300mm, various hard alloy.

- Tiny Diameter, Deep Hole
- Hard Alloy
- Super Practical Small Holes Drilling EDM



## INDUSTRIAL APPLICATIONS

Pressing dies, Semi-conductive Molds, Automobile Parts, Start Hole of Wire EDM, Watch Spares, Aerospace Components, Medical Equipment Spares, Fuel Spray Nozzle, Turbine Blade and etc.



- ▶ **Deep Hole Process**  
Thickness: 320mm  
Diameter: 1.0mm



- ▶ **Hard Alloy Machining**  
Thickness: 20mm  
Diameter: 0.5/0.8mm



- ▶ **Sphere Holes Machining**  
Diameter: 1.0/0.5/0.3mm



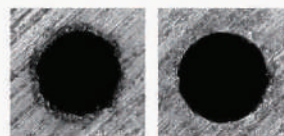
- ▶ **NC 4<sup>th</sup> Axis Machining**  
Thickness: 50mm  
equipped with optional 4th axis



- ▶ **Variate thickness Control Machining**  
Thickness: 25/50/75mm  
Equipped with 4th axis (Z2)



- ▶ **Different Material Hollow Machining**  
Material: Stainless steel with tungsten inside  
Thickness: 300mm  
Diameter: 1.0mm



- ▶ **With/without Surface Protection**  
Material: stainless steel  
Diameter: 1.0mm  
(enlarge 500 times view)



- ▶ **Thimble Machining**  
Thickness: 40mm  
Diameter: 1.0/1.5/2.0/2.5mm

## MACHINE SPECIFICATIONS

Items	PDE 43A	PDE 43B	PDE 43C	PDE 43D	PDE 43E
Diameter range of electrode	∅0.15-∅3.0 mm	∅0.3-∅3.0 mm	∅0.3-∅3.0 mm	∅0.1-∅3.0 mm	∅0.2-∅3.0 mm
Control axis	Z	Z	Z	Z	Z
Table size	440x320mm	440x320mm	440x320mm	490x350mm	440x320mm
Table travel	400x300mm	400x300mm	400x300mm	450x350mm	400x300mm
Max. input power	4KW	4KW	4KW	4KW	4KW
Digital display axis	X,Y,Z	X,Y,Z	X,Y,Z	X,Y,Z	X,Y,Z
Pressure	12Mpa	8Mpa	8Mpa	12Mpa	8Mpa
Backslide Movement	Motorised	Manual	Motorised	Motorised	Motorised
Table load	300kg	300kg	300kg	380kg	300kg
Weight of machine	700kg	650kg	650kg	860kg	650kg

## STANDARD ACCESSORIES LIST

Item Name	Specification
Inner hexagon spanner	M3 M4 M5 M6 M8
Double-head screwdriver	
Shear for electrode	
Guide	∅0.5mm / 1
Guide	∅1.0mm
Electrode	∅0.5mm
Electrode	∅1.0mm
Electrode seal	

Item Name	Specification
Chuck	
Filter of pump	
Tap connector	
Foot block	M 16
Water tank	
Water barrel	
Water cover	
Manual	

## FIND NEAREST TECHNICAL CENTER

Mumbai	Ludhiana
Ahmedabad	Nasik
Bengaluru	Noida
Chennai	Pune
Kolhapur	